

Postal Himal

QUARTERLY JOURNAL OF THE NEPAL AND TIBET PHILATELIC STUDY CIRCLE

NTPSC Homepage (courtesy of Rainer Fuchs) <http://fuchs-online.com/ntpsc>





Postal Himal is a quarterly publication of the Nepal & Tibet Philatelic Study Circle. Membership subscriptions run from January through December of each year. Dues should be paid in local currency at the prevailing exchange rate to the Society representative in your area.

	<u>One Year</u>	<u>Three Years</u>	<u>Life Member</u>
Great Britain	£12	£33	£250
USA	\$18	\$50	\$375
Europe	€19	€52	€390

American Philatelic Society Affiliate #122 British Philatelic Federation Affiliate #435

Secretary: Mr. Colin T. Hepper
 C72 Calle Miguel Angel
 El Sueno - Fase I
 El Chaparral
 03180 Torrevicja
 Alicante
 Spain
 Phone & Fax 34 96 6784701
 email: hepper@terra.es

Editor: Mr. Richard M. Hanchett
 6 Rainbow Court
 Warwick, RI 02889-1118
 USA
 Phone (401) 738 0466
 email: editorofpostalhimal@cox.net

The Board of Directors:

President: Prof. Armand Singer, singer@wvu.edu
 Vice President: Mr. Dick van der Wateren
 Treasurer: Mr. Colin T. Hepper
 Members at large: Mr. Christopher Kinch, Mr. Alan Warren

Past President: Dr. Wolfgang C. Hellrigl
 Secretary: Mr. Colin T. Hepper
 Auctioneer: Mr. Alfonso G. Zulueta Jr.
 Editor: Mr. Richard M. Hanchett

Representatives:

Europe: Mr. Colin T. Hepper - see address above
 India: Mr. Sohan Lal Dhawan & Sons, P. O. Box 95, Patiala 147001, India
 Nepal: Mr. Surendra Lal Shrestha, G. P. O. Box 72, Kathmandu, Nepal
 USA: Mr. Roger Skinner, 1020 Covington Road, Los Altos, CA 94024, USA

Life Members: Mario C. Barbieri, Jeremy Brewer, Geoffrey Flack, P. Gupta, Richard M. Hanchett, Wolfgang C. Hellrigl, William Janson, Kenneth Javonovich, G. Lenser, Leo Martyn, R. Murray, Peter Planken, Barbara Praytor, S. L. Shrestha, Roger Skinner, Dick van der Wateren, Alfonso G. Zulueta Jr.

New Members:

Change of Address:

Dropped for Non-Payment of Dues:

Lost Members: (Anyone knowing the address, please send it in)

Publishing Schedule:

Issue

Cutoff for Articles

Into Mail

113 - 1st Quarter 2003	February 28, 2003	March 15, 2003
114 - 2nd Quarter 2003	May 30, 2003	June 14, 2003
115 - 3rd Quarter 2003	August 29, 2003	September 13, 2003
116 - 4th Quarter 2003	November 21, 2003	December 06, 2003

TABLE OF CONTENTS

Officer's Corner		1
Editor's Ramblings	Richard M. Hanchett	1
Consensus of Nepal Meters	Roger Skinner	2
Oldest PO in Tibet	Li Ronghua	14
Mail Runner 1931	Julie Marshall	15
Nepal's Top Value	S. L. Shrestha	16

Officer's Corner

Dear Members

How quickly a year goes by, as it seems only yesterday that Richard was reminding me that I was in the chair for a report in this issue. One of the objectives of our Study Circle is to publish studies of the stamps and Postal History of the areas we cover. This has been done at regular intervals since we were formed and I hear that the latest book on the Revenue Stamps of Nepal has been completed by our Vice President Dick van der Wateren. I had a preview of this in its early stages about eighteen months ago and I am sure that when it goes to print there will be another fine addition to our Study Circle's publications.

It was after my last meeting with Dick that he gave me the enthusiasm to put pen to paper again and I decided that the modern postmarks of Nepal needed to be updated. When I wrote the latter sections of the Native Postmarks of Nepal, the recorded postmarks after 1970 were rather sketchy as not too much information was available. Over the last 30 years I have

accumulated a large amount of the modern postmarks and so have decided to go through them and record as many as I can. This is not always very easy as most of the cancellations are in violet ink and where the cancellation covers the stamps it is not often that the lettering can be distinguished. So far I have over 500 postmarks and registration cachets drawn and recorded and I still have a good number to work on over the coming winter months. So hopefully when Richard sends me a reminder about a report in next years Postal Himal I will have something more positive to report. If there are any of you who also collect modern Postal History I would appreciate it if you send me photocopies of any clear postmarks that you may have.

Finally I would like to thank Richard for doing such a good job in producing a good magazine on time.

Colin Hepper

Editor's Ramblings

Enclosed with this issue is your dues notice with an indication to whom the payment is to be sent. Please **note that your dues must be received by that person by 31 January 2003** in order for you to remain a member. As postage and printing costs have continued to increase we cannot afford to continue sending copies of Postal Himal to those who do not pay.

Congratulations to Julie Marshall. Her exhibit of the pre-adhesive period and the classic stamps of Nepal was awarded a large vermeil medal at Stampshow Melbourne 02, Australia's national stamp exhibition.

Word has been received from Dick van der Wateren that his book on Nepal Revenues has been published. The volume is around 125 pages in length with two pages in color. The book can be obtained from Dick for US \$20.00 or € 20 (postpaid) from him at

Ijsbaanweg 8
8391 HZ Noordwolde
Netherlands

Cheques **cannot** be accepted.

The forward is by our president Armand Singer, who says, in part, " an absolutely indispensable monograph for the revenue collector".

N. G. Rajkarnikar, a dealer and one of the pioneer collectors of Nepal as well as being an expert in the field died on 22 October 2002. This information from S. L. Shrestha. See PH 97 for an article by Colin Hepper. Mr. Rajkarnikar was known to many as a source of Nepal and Tibet material.

Nepal Postage Meters - A Census of Denominations and Types of Meters

by Roger Skinner

Type A Meter

Meter Number	Date of Use DDMMYY	Kathmandu User	Denomination	Multiples Used	Slogan Used?	Item Reported by
KN-2	10 Apr 1967	G.P.O.	0.15		no	GW
KN-2	10 Apr 1967	G.P.O.	0.25		no	FV GP
KN-2	10 Apr 1967	G.P.O.	0.25 & 0.70		no	SLS
KN-7	22 Jun 1973	R. B. Bank	0.25 & 1.00	1.00 (4)	no	EL
KN-7	28 Jul 1973	R. B. Bank	0.75 & 1.00	1.00 (10)	no	
KN-7	8 Jan 1979	R. B. Bank	0.15	0.15 (2)	no	
KN-7	29 Jan 1979	R. B. Bank	0.15 & 1.00	0.15 (2) 1.00 (2)	no	
KN-7	8 Feb 1979	R. B. Bank Note (1)	0.15	0.15 (2)	no	
KN-7	14 Feb 1979	R. B. Bank	0.15 & 1.00	0.15 (2) 1.00 (2)	no	
KN-7	15 Feb 1979	R. B. Bank Note (1)	0.15	0.15 (2)	no	
KN-7	23 Feb 1979	R. B. Bank Note (1)	0.15	0.15 (2)	no	
KN-7	26 Mar 1979	R. B. Bank Note (1)	0.15	0.15 (2)	no	
KN-7	30 Nov 1978	R. B. Bank	0.15	0.15 (2)	no	
KN-7	3 Mar 1982	R. B. Bank	0.15		no	
KN-7	undated	R. B. Bank	0.05	0.05 (6)	no	
KN-8	29 May 1978	N. I. D.C.	0.15	0.15 (2)	no	
KN-8	31 Oct 1984	N. I. D.C.	1.00		no	
KN-10	29 Mar 1968	SOALTEE	0.80		yes	RDC
KN-10	22 Apr 1970	SOALTEE	0.50	1.00 (2)	?	EL
KN-10	29 Mar 1982	SOALTEE	0.10	0.10 (4)	yes	
KN-12	3 May 1976	Yeti Travel	0.10 & 0.65	1.25 (2)	no	EL
KN-12	3 May 1976	Yeti Travel	0.10 & 0.15		no	
KN-13	19 Jan 1972	K.S. KOSH.	0.25		no	
KN-13	15 Apr 1975	K.S. KOSH.	0.25		no	
KN-13	18 Nov 1976	K.S. KOSH.	0.15	0.15 (2)	no	
KN-13	27 Nov 1978	K.S. KOSH.	0.15	0.15 (2)	no	
KN-13	26 Dec 1978	K.S. KOSH.	0.05 & 0.25		no	
KN-13	14 Aug 1983	K.S. KOSH.	0.15 & 0.75 & 1.00	1.00 (3)	no	
KN-14	10 Aug 1967	Annapurna	1.25	1.25 (2)	?	EL

Type A Meter (continued)

Meter Number	Date of Use DDMMYY	Kathmandu User	Denomination	Multiples Used	Slogan Used?	Item Reported by
KN-14	10 Oct 1967	Annapurna	1.25	1.25 (2)	?	EL
KN-14	15 Apr 1969	Annapurna	0.15 & 1.00	0.15 (3) 1.00 (2)	?	EL
KN-14	28 Feb 1971	Annapurna	1.00 & 1.25	1.00 (2)	yes	STA
KN-14	19 Aug 1973	Annapurna	1.00 & 1.25	1.00 (2)	?	EL
KN-15	22 Feb 1972	Nepal Bank (H.O.)	0.25		yes	
KN-15	1 Feb 1982	Nepal Bank (H.O.)	0.15 & 0.25		no	
KN-15	24 Jan 1983	Nepal Bank (H.O.)	0.65		no	
KN-15	27 Jan 1983	Nepal Bank (H.O.)	0.25 & 0.65 & 1.00	1.00 (3)	no	
KN-15	20 May 1984	Nepal Bank (H.O.)	0.25 & 0.65		yes	KN
KN-19	5 Jun 1975	U.S.I.S.	0.10 & 0.15		no	
KN-19	13 Apr 1978	U.S. Emb.	1.00		no	
KN-22	28 Dec 1971	Emb of India	0.02		no	
KN-22	13 Nov 1978	Emb of India	0.25		no	
KN-23	12 Dec 1968	Shah & Rai	0.10 & 0.20	0.20 (2)	?	EL
KN-26	27 Sep 1968	N.C.E.	0.20 & 1.00		?	STA
KN-26	20 Oct 1968	N.C.E.	0.80 & 1.00		no	RDC
KN-26	22 May 1969	N.C.E.	0.80		yes	STA
KN-26	30 Aug 1970	N.C.E.	0.80 & 1.00		no	EL
KN-32	7 Jul 1974	Third Eye Tours	0.20 & 1.10		?	
KN-33	10 Aug 1979	T.P.C.	0.05 & 0.25		no	
KN-48	15 Aug 1980	R.N.A.C.	0.15	0.15 (2)	yes	
KN-49	11 Aug 1978	R.N.A.C.	0.20		yes	

Type B Meter

Meter Number	Date of Use DDMMYY	Kathmandu User	Denomination	Multiples Used	Slogan Used?	Item Reported by
KN-47	11 Jul 1978	RABA-KBO	0.30		no	
KN-47	7 Dec 1978	RABA-KBO	0.30		no	
KN-47	8 Jul 1988	RABA-KBO	0.30		no	
KN-47	13 Jul 1988	RABA-KBO	0.30		no	
KN-67	25 Mar 1981	G.P.O.	0.25	0.25 (2)	no	

Type B Meter (continued)

Meter Number	Date of Use DDMMYY	Kathmandu User	Denomination	Multiples Used	Slogan Used?	Item Reported by
KN-67	6 May 1981	G.P.O.	0.05 & 0.45		no	
KN-67	19 Sep 1981	G.P.O.	2.00 & 5.00		no	GW RDC
KN-67	3 Jun 1982	G.P.O.	0.00		no	GW RDC
KN-67	3 Jun 1982	G.P.O.	0.05		no	GW RDC
KN-67	3 Jun 1982	G.P.O.	0.15		no	GW RDC
KN-67	3 Jun 1982	G.P.O.	0.25		no	GW RDC
KN-67	3 Jun 1982	G.P.O.	0.35		no	GW RDC
KN-67	3 Jun 1982	G.P.O.	0.45		no	GW RDC
KN-67	3 Jun 1982	G.P.O.	0.60		no	GW RDC
KN-67	3 Jun 1982	G.P.O.	0.80		no	GW RDC
KN-67	3 Jun 1982	G.P.O.	1.00		no	GW RDC
KN-67	3 Jun 1982	G.P.O.	2.00		no	GW RDC
KN-67	3 Jun 1982	G.P.O.	4.00		no	GW RDC
KN-67	3 Jun 1982	G.P.O.	5.00		no	GW RDC
KN-67	25 Jul 1982	G.P.O.	0.15 & 0.25		no	
KN-67	28 Jul 1982	G.P.O.	2.00 & 4.00		?	EL
KN-67	13 Feb 1983	G.P.O.	0.45 & 1.00 & 2.00 (on back)	0.45 (2)	no	
KN-67	15 Feb 1983	G.P.O.	0.45 & 1.00 and 2.00	0.45 (2)	no	
KN-67	5 Apr 1983	G.P.O.	0.25 & 2.00	0.25 (2)	no	
KN-67	1 May 1983	G.P.O.	0.05 & 0.60 & 1.00 & 2.00		no	
KN-67	20 May 1983	G.P.O.	4.00 & 0.15 (on back)		no	
KN-67	23 May 1983	G.P.O.	4.00	4.00 (2)	no	
KN-67	21 Jun 1983	G.P.O.	0.15 & 0.25		no	
KN-67	23 Jun 1983	G.P.O.	0.15 & 0.25		no	
KN-67	24 Jun 1983	G.P.O.	0.15 & 0.25		no	
KN-67	29 Jul 1983	G.P.O.	0.25	0.25 (2)	no	
KN-67	22 Aug 1983	G.P.O.	Note (2) 0.25	0.25 (2)	no	
KN-67	26 Aug 1983	G.P.O.	0.25		no	
KN-67	8 Sep 1983	G.P.O.	0.25	0.25 (2)	no	
KN-67	9 Sep 1983	G.P.O.	0.25	0.25 (2)	no	
KN-67	9 Sep 1983	G.P.O.	0.25	0.25 (2)	no	

Type B Meter (continued)

Meter Number	Date of Use DDMMYY	Kathmandu User	Denomination	Multiples Used	Slogan Used?	Item Reported by
KN-67	9 Sep 1983	G.P.O.	0.25	0.25 (2)	no	
KN-67	13 Sep 1983	G.P.O. (double dial)	0.25	0.25 (2)	no	
KN-67	27 Oct 1983	G.P.O. (date inverted and double dial)	0.25	0.25 (2)	no	
KN-67	1 Nov 1983	G.P.O.	0.05 & 1.00 & 5.00	0.05 (2)	no	
KN-67	17 Nov 1983	G.P.O.	0.75 & 5.00	0.75 (2) 5.00 (2)	no	
KN-67	21 Nov 1983	G.P.O. (date inverted)	1.00 & 2.00		no	MSS
KN-67	24 Nov 1983	G.P.O. (date inverted) (2)	0.25	0.25 (2)	no	
KN-67	28 Nov 1983	G.P.O.	0.25	0.25 (2)	no	
KN-67	20 Dec 1983	G.P.O. Note (3)	0.25	0.25 (2)	no	
KN-67	23 Dec 1983	G.P.O.	0.25		no	
KN-67	19 Jan 1984	G.P.O.	0.25	0.25 (2)	no	
KN-67	2 Feb 1984	G.P.O. (double dial)	0.25	0.25 (2)	no	
KN-67	13 Mar 1984	G.P.O.	0.25		no	
KN-67	6 Dec 1987	G.P.O. (reused)	0.60	0.60 (2)	no	
KN-112	?? ??? 1996	?	10.00		no	
KN-112	?? ??? 1996	?	10.00		no	

Meter Number	Date of Use DDMMYY	Banke User	Denomination	Multiples Used	Slogan Used?	Item Reported by
KN-1	29 Sep 1982	D.P.O.	1.00 & 2.00		no	GW
KN-1	13 Oct 1982	D.P.O.	0.60 & 0.80 & 2.00		no	

Meter Number	Date of Use DDMMYY	Dhanusa User	Denomination	Multiples Used	Slogan Used?	Item Reported by
KN-1	?? Aug 1982	DIST. POST. O.	0.05 & 0.65		no	
KN-1	4 Feb 1982	DIST. POST. O.	0.05 & 0.35		no	
KN-1	3 Aug 1982	DIST. POST. O.	0.05 & 0.35		no	
KN-1	5 Aug 1982	DIST. POST. O.	0.05 & 0.35		no	
KN-1	5 Aug 1982	DIST. POST. O.	0.05 & 0.35		no	

Type B Meter (continued)

Meter Number	Date of Use DDMMYY	Dhanusa User	Denomination	Multiples Used	Slogan Used?	Item Reported by
KN-1	5 Aug 1982	DIST. POST. O.	0.05 & 0.35		no	
KN-1	5 Aug 1982	DIST. POST. O.	0.05 & 0.35		no	
KN-1	14 Oct 1982	DIST. POST. O.	0.15 & 0.25		no	
KN-1	15 Oct 1982	DIST. POST. O.	0.05 & 0.35		no	
KN-1	15 Oct 1982	DIST. POST. O.	0.05 & 0.35		no	
KN-1	18 Oct 1982	DIST. POST. O.	0.05 & 0.35		no	
KN-1	19 Oct 1982	DIST. POST. O.	0.05 & 0.35		no	GW
KN-1	20 Oct 1982	DIST. POST. O.	0.05 & 0.35		no	
KN-1	20 Oct 1982	DIST. POST. O.	0.15 & 0.25		no	
KN-1	21 Oct 1982	DIST. POST. O.	0.15 & 0.25		no	GW
KN-1	21 Oct 1982	DIST. POST. O.	0.05 & 0.35		no	
KN-1	21 Oct 1982	DIST. POST. O.	0.05 & 0.35		no	
KN-1	30 Nov 1982	DIST. POST. O.	0.05 & 0.35		no	
KN-1	11 Dec 1982	DIST. POST. O. Note (4)	0.05 & 0.35		no	
KN-1	28 Dec 1982	DIST. POST. O.	0.05 & 0.35		no	
KN-1	30 Dec 1982	DIST. POST. O.	0.05 & 0.35		no	
KN-1	30 Dec 1982	DIST. POST. O.	0.05 & 0.35		no	
KN-1	30 Dec 1982	DIST. POST. O.	0.05 & 0.35		no	
KN-1	2 Jan 1983	DIST. POST. O.	0.05 & 0.35		no	
KN-1	3 Jan 1983	DIST. POST. O.	0.05 & 0.35		no	
KN-1	4 Feb 1983	DIST. POST. O.	0.05 & 0.35		no	

Meter Number	Date of Use DDMMYY	Jhapa User	Denomination	Multiples Used	Slogan Used?	Item Reported by
KN-1	14 Aug 1983	D. P. O.	0.45		no	
KN-1	24 Aug 1983	D. P. O.	0.25	0.25 (20)	no	
KN-1	1 Sep 1983	D. P. O. (registered)	0.25 & 4.00		no	
KN-1	7 Sep 1983	D. P. O.	0.25	0.25 (2)	no	
KN-1	10 Oct 1983	D. P. O.	0.25	0.25 (2)	no	
KN-1	10 Oct 1983	D. P. O.	0.25	0.25 (2)	no	
KN-1	21 Nov 1983	D. P. O.	0.25	0.25 (2)	no	
KN-1	18 Dec 1983	D. P. O.	0.25	0.25 (2)	no	

Type B Meter (continued)

Meter Number	Date of Use DDMMYY	Lalitpur User	Denomination	Multiples Used	Slogan Used?	Item Reported by
KN-1	21 May 1984	D. P. O.	0.25		no	
KN-1	27 Feb 1986	D. P. O.	0.25		no	

Meter Number	Date of Use DDMMYY	Parsa User	Denomination	Multiples Used	Slogan Used?	Item Reported by
KN-1	11 Oct 1982	DIST. POST. O.	0.15 & 0.25		no	
KN-1	14 Oct 1982	DIST. POST. O.	0.15 & 0.25 & 4.00		no	
KN-1	14 Oct 1982	DIST. POST. O.	0.25	0.25 (2)	no	
KN-1	14 Oct 1982	DIST. POST. O.	0.05	0.05 (2)	no	
KN-1	20 Oct 1982	DIST. POST. O.	0.15 & 0.25		no	
KN-1	17 Dec 1982	DIST. POST. O.			no	
KN-1	17 Dec 1982	DIST. POST. O.			no	
KN-1	17 Dec 1982	DIST. POST. O.			no	
KN-1	17 Dec 1982	DIST. POST. O.			no	
KN-1	19 Dec 1982	DIST. POST. O.			no	
KN-1	?? ??? 1983	DIST. POST. O.	0.05 & 0.80	0.05 (2)	no	
KN-1	23 May 1983	DIST. POST. O.	0.15 & 0.25		no	
KN-1	7 Jun 1983	DIST. POST. O.			no	
KN-1	17 Jun 1983	DIST. POST. O.			no	
KN-1	16 Aug 1983	DIST. POST. O.	0.25 & 1.00	0.25 (2)	no	
KN-1	1 Sep 1983	DIST. POST. O.	0.25	0.25 (2)	no	
KN-1	25 Oct 1983	DIST. POST. O.	0.25 & 4.00	0.25 (2)	no	
KN-1	25 Oct 1983	DIST. POST. O.	0.25	0.25 (2)	no	
KN-1	26 Oct 1983	DIST. POST. O.	0.25 & 4.00	0.25 (2)	no	
KN-1	27 Oct 1983	DIST. POST. O.			no	
KN-1	28 Oct 1983	DIST. POST. O.	0.25	0.25 (2)	no	
KN-1	31 Oct 1983	DIST. POST. O.	0.25 & 4.00	0.25 (2)	no	
KN-1	10 Nov 1983	DIST. POST. O.	0.25	0.25 (2)	no	
KN-1	13 Nov 1983	DIST. POST. O.	0.45	0.45 (2)	no	
KN-1	20 Nov 1983	DIST. POST. O.	0.25	0.25 (2)	no	
KN-1	20 Nov 1983	DIST. POST. O.	0.25 & 4.00	0.25 (2)	no	
KN-1	22 Nov 1983	DIST. POST. O.	0.25 & 4.00	0.25 (2)	no	
KN-1	24 Nov 1983	DIST. POST. O.	0.25	0.25 (2)	no	

Type B Meter (continued)

Meter Number	Date of Use DDMMYY	Parsa User	Denomination	Multiples Used	Slogan Used?	Item Reported by
KN-1	25 Nov 1983	DIST. POST. O.	0.25 & 4.00	0.25 (2)	no	
KN-1	25 Nov 1983	DIST. POST. O.	0.25	0.25 (2)	no	
KN-1	25 Nov 1983	DIST. POST. O.	0.25	0.25 (2)	no	
KN-1	25 Nov 1983	DIST. POST. O.	0.25 & 4.00	0.25 (20)	no	
KN-1	?? Dec 1983	DIST. POST. O.	0.45	0.45 (2)	no	
KN-1	7 Dec 1983	DIST. POST. O.	0.25	0.25 (2)	no	
KN-1	10 Dec 1983	DIST. POST. O.	0.25	0.25 (2)	no	
KN-1	13 Dec 1983	DIST. POST. O.	0.25 & 4.00	0.25 (2)	no	
KN-1	19 Dec 1983	DIST. POST. O.	0.25	0.25 (2)	no	
KN-1	25 Dec 1983	DIST. POST. O.	0.25	0.25 (2)	no	
KN-1	28 Dec 1983	DIST. POST. O.	0.25 & 4.00	0.25 (2)	no	
KN-1	2 Jan 1984	DIST. POST. O.	0.25	0.25 (2)	no	
KN-1	2 Jan 1984	DIST. POST. O.	0.25	0.25 (2)	no	
KN-1	2 Jan 1984	DIST. POST. O.	0.25	0.25 (2)	no	
KN-1	3 Jan 1984	DIST. POST. O.	0.25	0.25 (2)	no	
KN-1	4 Jan 1984	DIST. POST. O.	0.25 & 4.00	0.25	no	
KN-1	17 Jan 1984	DIST. POST. O.	0.25	0.25 (2)	no	
KN-1	18 Jan 1984	DIST. POST. O.	0.25	0.25 (2)	no	
KN-1	18 Jan 1984	DIST. POST. O.	0.25	0.25 (2)	no	
KN-1	20 Jan 1984	DIST. POST. O.	0.25	0.25 (2)	no	
KN-1	23 Jan 1984	DIST. POST. O.	0.25	0.25 (2)	no	
KN-1	29 Jan 1984	DIST. POST. O.	0.25 & 4.00	0.25 (2)	no	
KN-1	?? Feb 1984	DIST. POST. O.	0.25	0.25 (2)	no	
KN-1	2 Feb 1984	DIST. POST. O.	0.45 & 4.00		no	
KN-1	8 Feb 1984	DIST. POST. O.	0.25	0.25 (2)	no	

Meter Number	Date of Use DDMMYY	Rupandehi User	Denomination	Multiples Used	Slogan Used?	Item Reported by
KN-1	10 Nov 1983	DIST. POST. O.	0.25	0.25 (2)	no	
KN-1	23 Nov 1983	DIST. POST. O.	0.25	0.25 (2)	no	
KN-1	25 Nov 1983	DIST. POST. O.	0.25	0.25 (2)	no	
KN-1	27 Nov 1983	DIST. POST. O.	0.25	0.25 (2)	no	
KN-1	29 Nov 1983	DIST. POST. O.	0.25	0.25 (2)	no	

Type B Meter (continued)

Meter Number	Date of Use DDMMYY	Rupandehi User	Denomination	Multiples Used	Slogan Used?	Item Reported by
KN-1	?? Dec 1983	DIST. POST. O.	0.25	0.25 (2)	no	
KN-1	2 Dec 1983	DIST. POST. O.	0.25	0.25 (2)	no	
KN-1	9 Dec 1983	DIST. POST. O.	0.25	0.25 (2)	no	
KN-1	22 Dec 1983	DIST. POST. O.	0.25	0.25 (2)	no	
KN-1	23 Dec 1983	DIST. POST. O.	0.25	0.25 (2)	no	
KN-1	6 Jan 1984	DIST. POST. O.	0.25	0.25 (2)	no	
KN-1	19 Jan 1984	DIST. POST. O.	0.25	0.25 (2)	no	
KN-1	29 Jan 1984	DIST. POST. O.	0.05 & 0.35		no	
KN-1	31 Jan 1984	DIST. POST. O. (registered) (on back)	??.75 & 0.25 & 0.80	0.80 (4) 0.25 (2)?	no	Anon
KN-1	29 Feb 1984	DIST. POST. O	0.25 & 4.00	0.25 (2)	no	
KN-1	6 Mar 1984	DIST. POST. O	0.25	0.25 (2)	no	
KN-1	6 Mar 1984	DIST. POST. O	0.25	0.25 (2)	no	
KN-1	6 Mar 1984	DIST. POST. O	0.25	0.25 (2)	no	
KN-1	9 Mar 1984	DIST. POST. O	0.25	0.25 (2)	no	
KN-1	15 Mar 1984	DIST. POST. O	0.25	0.25 (2)	no	
KN-1	15 Mar 1984	DIST. POST. O	0.15 & 0.35		no	
KN-1	19 Mar 1984	DIST. POST. O	0.25	0.25 (2)	no	
KN-1	23 Mar 1984	DIST. POST. O	0.25	0.25 (2)	no	
KN-1	27 Mar 1984	DIST. POST. O Note (3)	0.25	0.25 (2)	no	
KN-1	27 Mar 1984	DIST. POST. O	0.25 & 4.00	0.25 (2)	no	
KN-1	28 Mar 1984	DIST. POST. O	0.25 & 4.00	0.25 (2)	no	
KN-1	29 Mar 1984	DIST. POST. O	0.25 & 4.00	0.25 (2)	no	
KN-1	29 Mar 1984	DIST. POST. O	0.25 & 4.00	0.25 (2)	no	
KN-1	30 Mar 1984	DIST. POST. O	0.25 & 4.00	0.25 (2)	no	
KN-1	17 Apr 1984	DIST. POST. O	0.25	0.25 (2)	no	
KN-1	8 May 1984	DIST. POST. O	0.05 & 0.25 & 0.60 & 4.00		no	

Meter Number	Date of Use DDMMYY	Saptari User	Denomination	Multiples Used	Slogan Used?	Item Reported by
KN-1	16 Mar 1983	D. P. O.	0.40		no	

Type C Meter

Meter Number	Date of Use DDMMYY	User	Denomination	Multiples Used	Slogan Used?	Item Reported by
KN-66	2 Sep 1990	DN?? Note (5)	1.80		no	SLS

Type D Meter

Meter Number	Date of Use DDMMYY	Kathmandu User	Denomination	Multiples Used	Slogan Used?	Item Reported by
KN-57	17 Sep 1992	T.U.	00.00		no	
KN-57	14 Sep 1993	T.U.	00.00		no	
KN-57	15 Sep 1993	T.U.	00.00		no	
KN-57	17 Sep 1993	T.U.	00.00		no	
KN-57	17 Sep 1993	T.U.	00.00		no	
KN-68	22 Oct 1982	D.O.T.	0.40		no	
KN-68	22 Oct 1982	D.O.T.	0.40		no	
KN-68	22 Oct 1982	D.O.T.	1.15		no	
KN-70	18 Jun 1983	H.B. & ?C.	1.00		no	
KN-76	18 Nov 1983	N.B.Ltd H.O.	00.50		yes	
KN-76	11 Jun 1984	N.B.Ltd H.O.	01.70		yes	
KN-76	7 Dec 1984	N.B.Ltd H.O.	01.40		no	
KN-76	10 Mar 1985	N.B.Ltd H.O.	01.40		no	HS
KN-76	?? ??? 8?	N.B.Ltd H.O.	01.30		no	

Meter Number	Date of Use DDMMYY	Dhankuta User	Denomination	Multiples Used	Slogan Used?	Item Reported by
KN-1	4 Jan 1985		0.50		no	
KN-1	8 Jan 1985		0.90		no	
KN-1	22 Jan 1985		0.50		no	
KN-1	15 Feb 1985		0.50		no	
KN-1	1? Feb 1985		0.50		no	
KN-1	3 Mar 1985		0.50		no	

Meter Number	Date of Use DDMMYY	Narayanhity User	Denomination	Multiples Used	Slogan Used?	Item Reported by
No number	20 Sep 1984		2.00		no	HS

Type E Meter

Meter Number	Date of Use DDMMYY	Kathmandu User	Denomination	Multiples Used	Slogan Used?	Item Reported by
KN-55	17 Jan 1982	R.B. BANK HO	0.40		no	
KN-55	21 Jan 1982	R.B. BANK HO Note (3)	1.10 & 1.15	1.15 (2)	no	
KN-55	27 Jan 1982	R.B. BANK HO	0.40		no	
KN-55	31 Jan 1982	R.B. BANK HO	1.00	1.00 (2)	no	
KN-55	4 Feb 1982	R.B. BANK HO	0.40		no	
KN-55	10 Feb 1982	R.B. BANK HO	0.40		no	
KN-55	5 Mar 1982	R.B. BANK HO	1.10 & 1.15	1.15 (2)	no	
KN-55	1 Apr 1982	R.B. BANK HO	0.40		no	
KN-55	2 Apr 1982	R.B. BANK HO	1.10 & 1.15	1.15 (2)	no	
KN-55	19 Apr 1982	R.B. BANK HO Note (3)	1.10 & 1.15	1.15 (2)	no	
KN-55	19 Apr 1982	R.B. BANK HO	0.40		no	
KN-55	20 Apr 1982	R.B. BANK HO	0.40		no	
KN-55	3 May 1982	R.B. BANK HO	0.40		no	
KN-55	5 May 1982	R.B. BANK HO	0.40		no	
KN-55	10 May 1982	R.B. BANK HO	0.40		no	
KN-55	11 May 1982	R.B. BANK HO	0.40		no	
KN-55	12 May 1982	R.B. BANK HO	0.40		no	
KN-55	13 May 1982	R.B. BANK HO	1.10 & 1.15	1.15 (2)	no	
KN-55	16 May 1982	R.B. BANK HO	0.40		no	
KN-55	3 Jun 1982	R.B. BANK HO Note (3)	0.40		no	
KN-55	7 Jul 1982	R.B. BANK HO	0.40		no	
KN-55	8 Jul 1982	R.B. BANK HO	0.40		no	
KN-55	11 Aug 1982	R.B. BANK HO Note (3)	0.40		no	
KN-55	13 Aug 1982	R.B. BANK HO	1.10 & 1.15	1.15 (2)	no	
KN-55	15 Aug 1982	R.B. BANK HO	0.40		no	
KN-55	22 Aug 1982	R.B. BANK HO	0.40		no	
KN-55	13 Sep 1982	R.B. BANK HO	0.40		no	
KN-55	23 Sep 1982	R.B. BANK HO	0.40		no	
KN-55	?? ??? ????	R.B. BANK HO	0.50		no	
KN-55	29 Mar 1983	R.B. BANK HO	1.10 & 1.15	1.15 (2)	no	
KN-55	12 Apr 1983	R.B. BANK HO	1.10 & 1.15	1.15 (2)	no	
KN-55	9 Sep 1983	R.B. BANK HO	0.50		no	
KN-55	15 Dec 1983	R.B. BANK HO	0.50		no	

Type E Meter (continued)

Meter Number	Date of Use DDMMYY	Dhankuta User	Denomination	Multiples Used	Slogan Used?	Item Reported by
KN-55	28 Feb 1984	R.B. BANK HO (Note 3)	1.10	1.10 (2)	no	
KN-55	30 Feb 1984	R.B. BANK HO	0.50		no	
KN-55	6 Mar 1984	R.B. BANK HO	0.50		no	
KN-55	1 May 1984	R.B. BANK HO	0.50		no	
KN-55	22 May 1984	R.B. BANK HO	0.50		no	
KN-55	4 Jun 1984	R.B. BANK HO	1.10	1.10(2)	no	
KN-55	? Jun 1984	R.B. BANK HO (Note 2)	0.50		no	

Type E Meter

Meter Number	Date of Use DDMMYY	User	Denomination	Multiples Used	Slogan Used?	Item Reported by
KN-70	5 Apr 1983	FCGO	0.40		no	
KN-70	3 Nov 1984	FCGO	0.50		no	
KN-70	13 Nov 1984	FCGO	0.50		no	

Type F Meter

Meter Number	Date of Use DDMMYY	User	Denomination	Multiples Used	Slogan Used?	Item Reported by
KN-81	18 Apr 1985	NABIL	0.50		no	
KN-91	17 Mar 1989	NIB Ltd.	x0.60		yes	
KN-95	26 Jul 1992	NGB	x1.00		no	
KN-95	11 May 1997	NGB	50.60		no	STA
KN-96	18 Jun 1989	D.P.O.	04.90		no	
KN-96	?? ??? 1991	D.P.O.			no	STA
KN-96	03 Dec 1992	D.P.O.	13.00		no	
KN-96	07 Apr 1992	D.P.O. (retired)	x7.0		no	
KN-96	09 Apr 1993	D.P.O. (retired)	x7.0		no	
KN-96	11 Apr 1993	D.P.O. (retired)	x7.0		no	
KN-96	11 Apr 1993	D.P.O. (retired)	x7.0		no	
KN-96	24 Apr 1996	D.P.O. (GPO sample)	x0.00		no	STA
KN-96	2 May 1996	D.P.O.	30.00		no	STA
KN-96	7 Apr 1997	D.P.O.	30.00		yes	STA

Type F Meter (continued)

Meter Number	Date of Use DDMMYY	User	Denomination	Multiples Used	Slogan Used?	Item Reported by
KN-97	24 Apr 1996	F.P.O. (GPO sample)	00.00		no	STA
KN-97	3 Sep 1997	F.P.O.	13.00		no	
KN-107	?? ??? 1993	H.S.O.				GP
KN-123	26 Jun 1993	C.C.	08.00			HS

x = Triplet of 3 wavy lines used in place of the first digit when no value is needed.

Notes on the Census:

- (1) The spacing between the slugs varies from cover to cover but it is more so than most other covers.
- (2) Three covers with the same date and same denominations used.
- (3) Two covers with the same date and same denominations used.
- (4) Most covers with more than one denomination or with multiples have one date slug and many denomination slugs. This cover has two complete meters, that is, each denomination slug has a date slug also.
- (5) No other examples seen.

The name shown under the User column is that which is seen within the meter itself.

The initial used under the Item Reported by column are as follows. Where no initials are used, the cover is that of the author.

Anon = Anonymous

EL = Ed Lapham

FV = Frank Vignola

GP = Gabe Pustel

GW = Gerhardt Wolf

HS = Heinz Schobel

MSS = Meter Stamp Society response

RDC = Roberto D. Casola

SLS = S. L. Shrestha

STA = Richard Stambaugh (Editor Meter Stamp Society journal)

Mr. S. L. Shrestha has kindly sent a correction to Mr. Wolfgang Bertsch's article on the Rana Period Prime Minister Seal (see PH No. 111 page 2 and illustration on page 3). The article stated that the lower portion of the seal was engraved in three different languages: Nepali, Persian and English. Mr. Shrestha points out that there are actually four languages; the last 1 and 1/2 lines within the oval circle are in Bengali.

The Oldest Post Office in Tibet

by Li Ronghua, China's Tibet No. 6 1999

submitted by Wolfgang Bertsch

In 1910, the Postal General Administration of the Qing Government set up post offices in Lhasa, Gyangze, Xigaze, Pagri and Yandong. This marked the beginning of the modern postal service in Tibet. Postal routes added up to 650 km.

The following year saw the establishment of the Postal Administration in Lhasa, and branches in Qamdo, Shubando, Gyamda, Gyangze, Pagri and Yadong. A total of 50,000 letters and parcels were handled in the same year. The same period saw these post offices start remittance service, and the opening of the postal routes from Kangding and Qamdo to Lhasa, totaling 2,550 km.

One year later, the Revolution of 1911, led by Dr. Sun Yat-sen, broke out, and toppled the Qing Government. All the Qing Government post offices set up in Tibet closed down, suspending postal links between China's hinterland and Tibet.

When the Republic of China (1912-1949) was founded, the Central Government set up a radio station in Lhasa to serve the Lhasa Office of the KMT Commission for the Mongolian and Tibetan Affairs. In 1912, the local government of Tibet renovated parts of houses belonging to the Danjeeling Monastery to the west of the Jokhang Monastery into a post office.

In accordance with an order from the 13th Dalai Lama, two large post offices were set up in Lhasa and Gyangze, and two small post offices in Nanggarze and Quxu. They handled services related to letters, parcels and remittances. The postal routes started from Lhasa to Taizao (in present-day Gongbo'gyamda) in the east, and Gyangze via Quxu and Nanggarze in the southwest. All postal matters were carried on shoulders to the destinations.

Post office workers often were not paid for

more than half a year, although they had to trudge in the wilderness day by day. To solve this problem, the Gaxag government decided that official documents would also be delivered through post offices, but those who failed to deliver official documents in time would be whipped. In areas where post offices were not set up, official documents continued to be delivered by couriers.

A telegraph office set up in Lhasa sent cables in two ways: Wired telegraphs from Lhasa to Gyangze and wireless telegraphs from Lhasa to Xigaze, Ngari, Ngaqu and Qamdo. The office served the local government of Tibet exclusively.

In 1904, the British invaded Tibet for a second time, and forced the local government of Tibet to sign the Lhasa Convention. On April 20, 1908, China and the British signed an agreement which allowed the British to open postal routes in Tibet. As a result, the British invaders set up postal and telegraph offices from Yadong to Gyangze and installed telephone facilities to serve their invasion.

In 1947, India declared independence, and the Indian Government took over British postal facilities in Tibet. On April 1, 1955, the Chinese Government took these facilities back, putting an end to the history when postal services were under control by the British and Indian Governments.

The Central Government and the local government of Tibet signed the Agreement on Methods for the Peaceful Liberation of Tibet on May 23, 1951 in Beijing. On January 10, 1952, the Tibet Work Committee of the Central Government was set up. With aid and support from the Ministry of the Posts and Telecommunications, the Work Committee began working to build up the postal service in the interest of the Tibetan people.

Editor's Note: There were several photos which accompanied this article but the quality was not good enough for reproduction.

Picture of a mail runner in 1931

by Julie Marshall

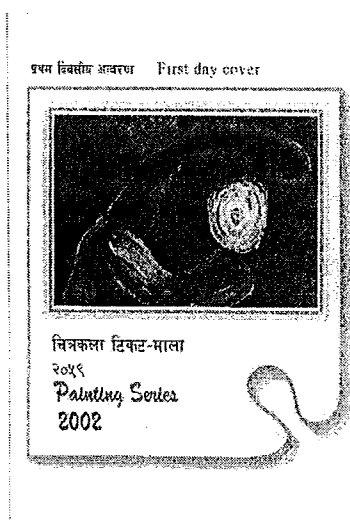
I am presently updating an annotated bibliography I compiled in 1977 entitled *Britain and Tibet 1765-1947* which covers British relations with Tibet and the Indo-Tibetan border regions. Whilst most of the material being included has been published since 1977 I am also finding some earlier books and articles which were not included in the original work. In one of these articles by H. de Torra¹ published in the *National Geographic Magazine* in 1931 is a picture of a mail runner on page 321.

On the previous page there is a photo of a rough structure entitled "The Post Office as a social centre even in the Himalayas". Below the photo the caption says "An efficient and reliable mail service is maintained between Kashmir and Ladakh. Although post office buildings along the mountain roads sometimes look as if they were about to fall apart, they nevertheless serve as informal club houses for certain of the male population".

(Editor's Note: The belt buckle says 'MAIL RUNNER').



¹ Torra, H. de. On the world's highest plateaus: through an Asiatic no man's land to the desert of ancient Cathay. *National Geographic Magazine* 59:319-367, Jan-June, 1931.



Technical Details

Subject	: Painting Series a) Moti (The Pearl) b) Aryabalakiteshwar
Denomination	: R. 5 each
Colour	: Four Colour
Composition	: 50 stamps per sheet
Size	: 35 x 50 mm.
Process	: Offset Lithography
Quantity	: One Million each
Format:	: a) Horizontal b) Vertical
Paper	: High quality stamp paper
Designer	: K. K. Karmacharya
Printer	: Austrian Government Printing Office, Vienna Austria

Courtesy of HMG Nepal Post

Nepal's Top Value

by S. L. Shrestha

His Majesty's Government of Nepal Postal Services Department has sold the top value of Nepal on Mount Everest to collectors. They were on sale from 19 July 2000 to 19 July 2001 at which time the sale was closed and they are no longer available from the Department.

The issue was originally printed in 1962. According to Mr. Ramesh Shrestha, although prepared for income tax purposes they were not issued and remained in the treasury for some twenty-one years before being released by the Finance Ministry on July 14, 1983 (1st Shrawan 2040 VE) to raise funds with surcharges or premiums on custom duties, airline tickets, visas, insurance policies, etc., but were not applied to income taxes (PH 63:41 (ill.) and PH 68:53 (ill)).

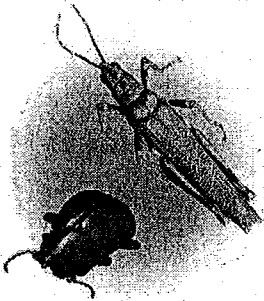
As all Nepal postage stamps including 'Service' stamps and 'Postal Order' receipts were printed by Security Press of India at Nasik at that time, it is presumed that these stamps were also produced by that organization in an offset lithographic process.



Value : 50 Rs.
Color : Deep Carot
Sheet : 224 (14 x 16)
Quantity: 104384

Value : 100 Rs.
Color : Ultramarine
Sheet : 224 (14 x 16)
Quantity: 100800

पशुमा विषयको सम्बन्धमा First Day Cover



किराफट्याइया टिकट-माला - २०५९
Insect Series /2002



Technical Details
Subject : Insect Series
a) *Ambrostoma mahesa (Hope)*/Leaf
b) *Poecilocerus pictus* / Locust
Denomination : a) R. 3 b) R. 5
Colour : Four Colour
Composition : 50 stamps per sheet
Size : 30 x 30 mm.
Process : Offset Lithography
Quantity : One million each
Format : Square
Paper : High quality stamp paper
Designer : M. N. Rana
Printer : Austrian Gov't Printing, Vienna, Austria

पुत्र र सौतेला भेद बन्दी First day cover



Regular Series
2002



Technical Details
Subject : Regular Series
a) No discrimination between son and daughter
b) Untouchability is a social crime
Denomination : a) R. 2 b) R. 1
Colour : Two Colour
Composition : 100 stamps per sheet
Size : 26 x 32.25 mm. both
Process : Offset Lithography
Quantity : a) Five million b) Two and a half million
Format : Horizontal
Paper : High quality stamp paper
Designer : K. K. Karmacharya
Printer : Austrian Gov't Printing, Vienna, Austria

Courtesy of HMG Nepal Post